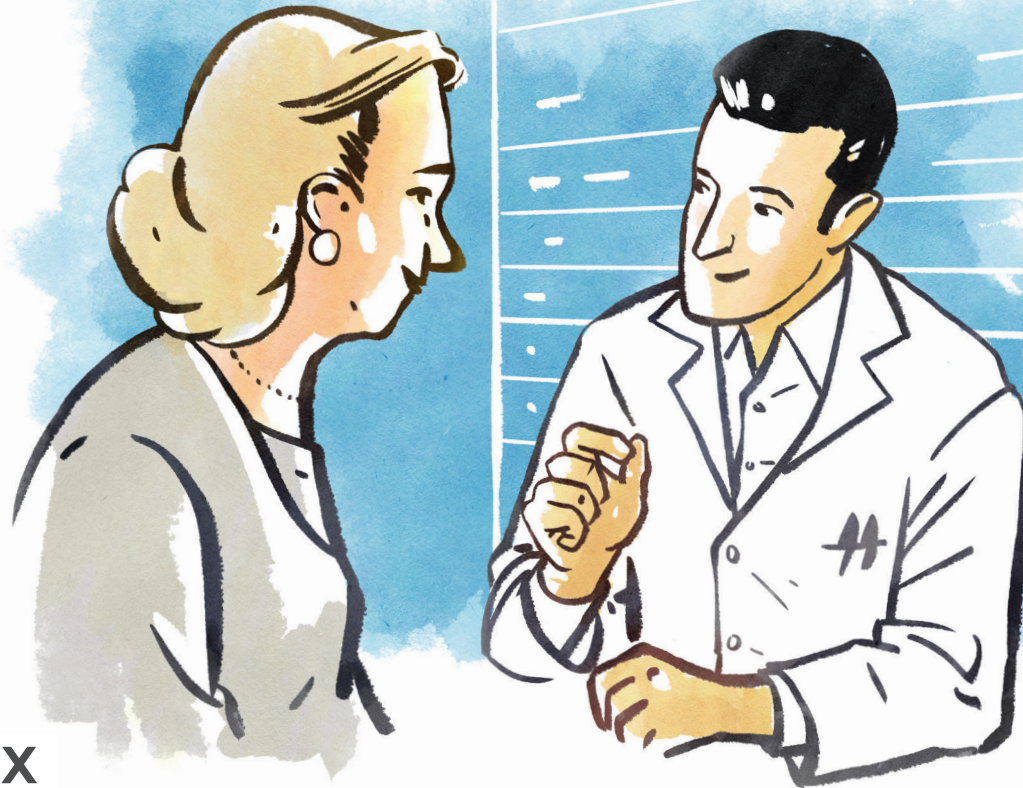


# SHINGRIX: FROM CONVERSATION TO VACCINATION

YOUR ROADMAP FOR MOTIVATING PATIENTS  
TO GET VACCINATED AGAINST SHINGLES



**SHINGRIX**  
(ZOSTER VACCINE  
RECOMBINANT, ADJUVANTED)

#### Indication

SHINGRIX is a vaccine indicated for prevention of herpes zoster (shingles) in adults aged 50 years and older.

SHINGRIX is not indicated for prevention of primary varicella infection (chickenpox).

#### Important Safety Information

- SHINGRIX is contraindicated in anyone with a history of a severe allergic reaction (eg, anaphylaxis) to any component of the vaccine or after a previous dose of SHINGRIX

Please see additional Important Safety Information for SHINGRIX throughout and full Prescribing Information at [SHINGRIXHCP.com](http://SHINGRIXHCP.com).

# UNDERSTAND THE UNDERLYING CAUSE OF SHINGLES

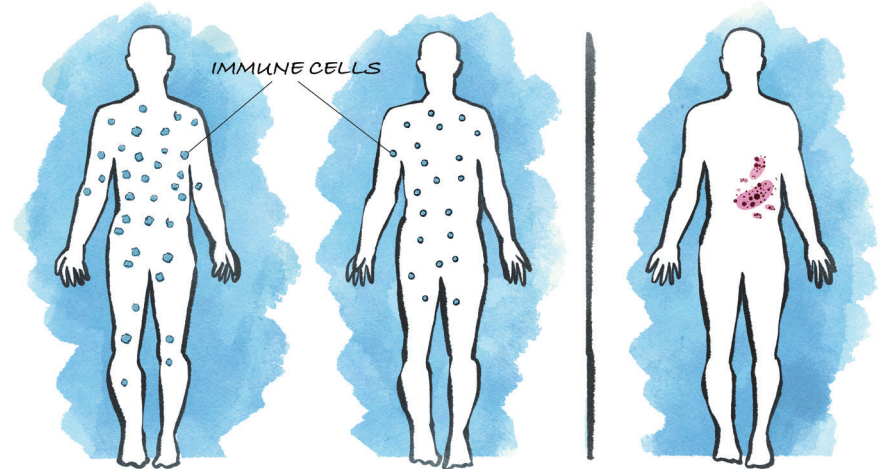


A DOMINANT DRIVER OF SHINGLES IS AGE-RELATED DECLINE IN IMMUNITY (ARDI).<sup>1-3</sup>

## THIS IS HOW ARDI HAPPENS:

99% of people aged 50 years and older are infected with the varicella zoster virus (VZV).<sup>4</sup>

In 1 out of 3 people, the dormant virus reactivates and causes shingles during their lifetime.<sup>1</sup>



1- Increasing age causes a natural decline in immunity.<sup>2</sup>

2- As immune function declines, there is a reduction in the number and functionality of immune cells that prevent reactivation of VZV.<sup>1,3,5,7</sup>

3- Age-related decline in immunity leads to an increase in the incidence and severity of shingles.<sup>2,2</sup>

### Indication

SHINGRIX is a vaccine indicated for prevention of herpes zoster (shingles) in adults aged 50 years and older.

Please see additional Important Safety Information for SHINGRIX throughout and full Prescribing Information at [SHINGRIXHCP.com](http://SHINGRIXHCP.com).

### Indication (cont'd)

SHINGRIX is not indicated for prevention of primary varicella infection (chickenpox).



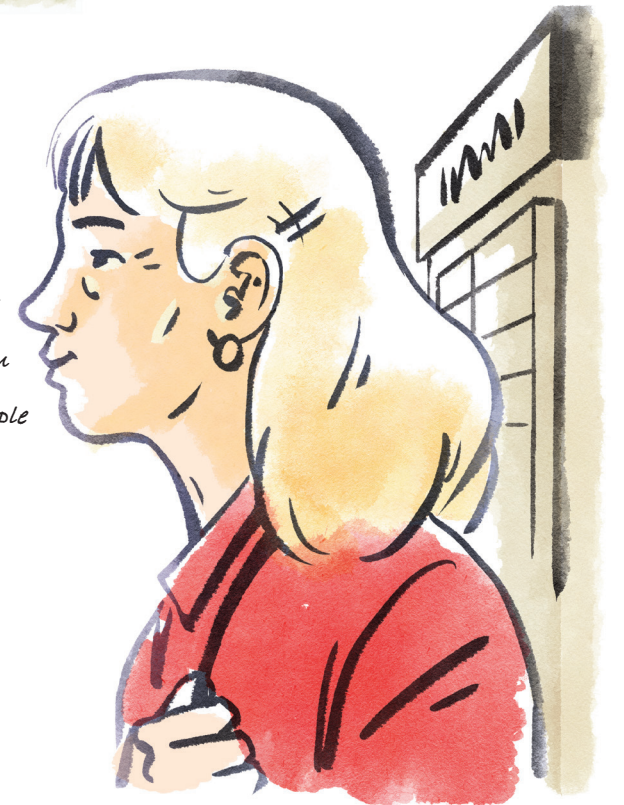
TELL THEM WHY  
THEY'RE AT RISK



"If you've had chickenpox, the virus that causes shingles is already in your body, regardless of how healthy you are..."



...It can reactivate anytime. And your risk increases as your immune system naturally declines with age. 1 out of 3 people gets it during their lifetime.<sup>11,7-10</sup>



#### Important Safety Information

- SHINGRIX is contraindicated in anyone with a history of a severe allergic reaction (eg, anaphylaxis) to any component of the vaccine or after a previous dose of SHINGRIX

Please see additional Important Safety Information for SHINGRIX throughout and full Prescribing Information at [SHINGRIXHCP.com](http://SHINGRIXHCP.com).

#### Important Safety Information (cont'd)

- Review immunization history for possible vaccine sensitivity and previous vaccination-related adverse reactions. Appropriate medical treatment and supervision must be available to manage possible anaphylactic reactions following administration of SHINGRIX



**SHINGRIX**  
(ZOSTER VACCINE  
RECOMBINANT, ADJUVANTED)

# EXPLAIN HOW BAD SHINGLES CAN BE

MANY PEOPLE MAY ASSOCIATE SHINGLES WITH THE TELLTALE PAINFUL RASH. BUT THERE COULD BE POSSIBLE COMPLICATIONS, MAKING IT MUCH MORE SERIOUS.<sup>1,11</sup>

*"Not only is shingles a blistering rash that can be painful, but it can also cause postherpetic neuralgia (PHN), nerve pain that can last for months. And if you get shingles near your eyes, it can cause vision complications."<sup>1,11,12</sup>*



*"What have you heard about shingles?"*



## Did you know...

PHN affected 13% of adults with shingles between 60 and 79 years of age and 20% of adults with shingles ≥80 years of age in a population-based study.<sup>13</sup>

The benefit of SHINGRIX in the prevention of PHN can be attributed to the effect of the vaccine on the prevention of herpes zoster. The efficacy of SHINGRIX in the prevention of PHN in subjects with confirmed herpes zoster could not be demonstrated.<sup>12</sup>

Visual complications can occur. Herpes zoster ophthalmicus, which affects between 10% and 25% of adults with shingles, can lead to ophthalmic complications, including, in rare cases, vision loss.<sup>1</sup>

SHINGRIX is not indicated for the prevention of PHN and other complications.

## Important Safety Information (cont'd)

- In a postmarketing observational study, an increased risk of Guillain-Barré syndrome was observed during the 42 days following vaccination with SHINGRIX

Please see additional Important Safety Information for SHINGRIX throughout and full Prescribing Information at [SHINGRIXHCP.com](http://SHINGRIXHCP.com).

## Important Safety Information (cont'd)

- Syncope (fainting) can be associated with the administration of injectable vaccines, including SHINGRIX. Procedures should be in place to avoid falling injury and to restore cerebral perfusion following syncope



# ADDRESSING PATIENT CONCERNS

IN SOME CASES, PATIENTS WILL STILL FEEL UNSURE ABOUT GETTING VACCINATED. HERE ARE SOME POSSIBLE SCENARIOS AND HOW YOU CAN RESPOND.

**"But I need to talk to my doctor first."**  
*"SHINGRIX is recommended for patients 50 years and older."<sup>2,4</sup> I can reach out to your doctor right now and talk to them."*

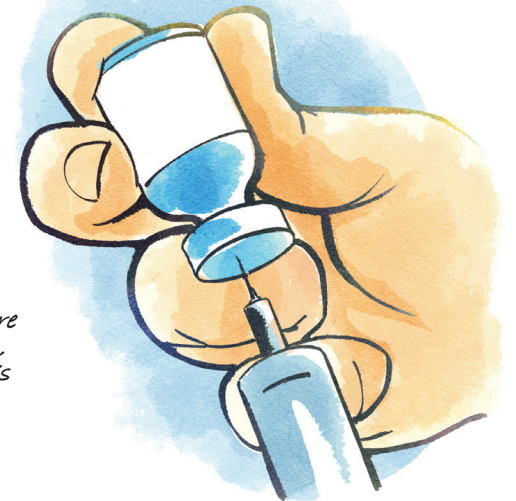


**"Is this covered by my health insurance plan?"**  
*"Most plans cover SHINGRIX. I can check for you right now."<sup>15,16</sup>*

**"I can't be at risk. I'm healthy."**  
*"No matter how healthy you feel or how good you are with diet and exercise, you're still at risk because your immune system declines as you age."<sup>1,2,7</sup>*



**"I don't have time to get vaccinated today."**  
*"You can get immunized here right now, or if you're busy, we can schedule a time that's more convenient for you."*



## Important Safety Information (cont'd)

- Solicited local adverse reactions reported in individuals aged 50 years and older were pain (78%), redness (38%), and swelling (26%)

Please see additional Important Safety Information for SHINGRIX throughout and full Prescribing Information at [SHINGRIXHCP.com](http://SHINGRIXHCP.com).

## Important Safety Information (cont'd)

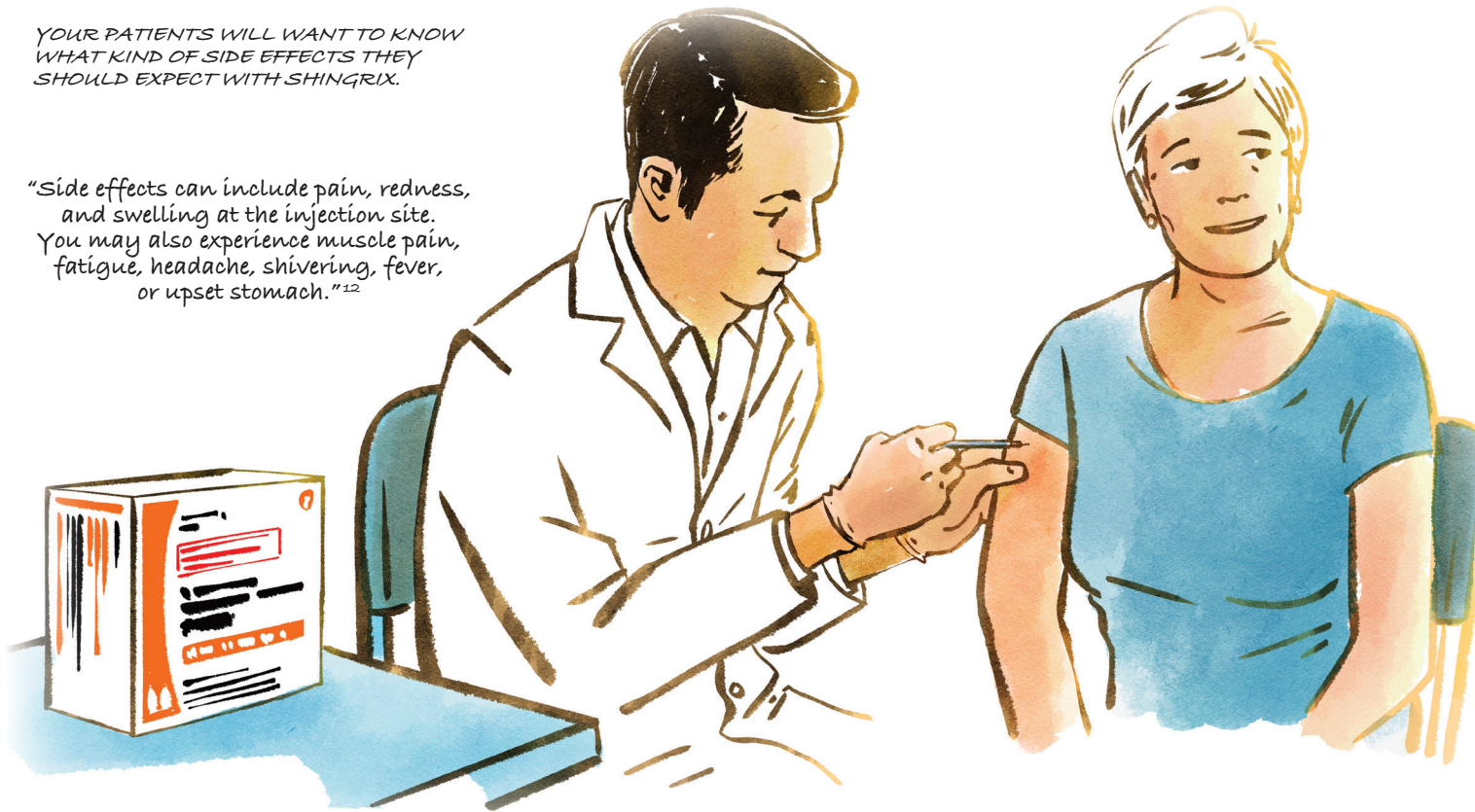
- Solicited general adverse reactions reported in individuals aged 50 years and older were myalgia (45%), fatigue (45%), headache (38%), shivering (27%), fever (21%), and gastrointestinal symptoms (17%)

 **SHINGRIX**  
(ZOSTER VACCINE  
RECOMBINANT, ADJUVANTED)

## ADVERSE EVENTS

YOUR PATIENTS WILL WANT TO KNOW WHAT KIND OF SIDE EFFECTS THEY SHOULD EXPECT WITH SHINGRIX.

"Side effects can include pain, redness, and swelling at the injection site. You may also experience muscle pain, fatigue, headache, shivering, fever, or upset stomach."<sup>12</sup>



"The majority of solicited local adverse reactions and general adverse events seen with SHINGRIX had a median duration of 2 to 3 days."<sup>12,17,18</sup>



### Important Safety Information (cont'd)

- The data are insufficient to establish if there is vaccine-associated risk with SHINGRIX in pregnant women
- It is not known whether SHINGRIX is excreted in human milk. Data are not available to assess the effects of SHINGRIX on the breastfed infant or on milk production/excretion

Please see additional Important Safety Information for SHINGRIX throughout and full Prescribing Information at [SHINGRIXHCP.com](http://SHINGRIXHCP.com).

### Important Safety Information (cont'd)

- Vaccination with SHINGRIX may not result in protection of all vaccine recipients

 **SHINGRIX**  
(ZOSTER VACCINE  
RECOMBINANT, ADJUVANTED)

# REMIND AND RECOMMEND

Once you've gotten the conversation started, continue to stress the importance of shingles vaccination when talking with your appropriate patients. And remind them that **only SHINGRIX delivered >90% efficacy against shingles, regardless of age, in patients 50 years and older.**<sup>12,\*</sup>

For additional information and other patient resources, go to **talkingSHINGRIX.com**

## Indication

SHINGRIX is a vaccine indicated for prevention of herpes zoster (shingles) in adults aged 50 years and older.

SHINGRIX is not indicated for prevention of primary varicella infection (chickenpox).

## Important Safety Information

- SHINGRIX is contraindicated in anyone with a history of a severe allergic reaction (eg, anaphylaxis) to any component of the vaccine or after a previous dose of SHINGRIX

Please see additional Important Safety Information for SHINGRIX throughout and full Prescribing Information at [SHINGRIXHCP.com](http://SHINGRIXHCP.com).

\*Data from the phase 3 ZOE-50 (≥50 years of age) trial and pooled data in individuals ≥70 years of age from the phase 3 ZOE-50 and ZOE-70 trials in subjects who received 2 doses of SHINGRIX (N=7344 and 8250, respectively) or placebo (N=7415 and 8346, respectively) and did not develop a confirmed case of herpes zoster within 1 month after the second dose.<sup>12</sup>

**References:** 1. Centers for Disease Control and Prevention. Prevention of herpes zoster: recommendations of the Advisory Committee on Immunization Practices (ACIP). *MMWR*. 2008;57(RR-5):1-30. 2. Kimberlin DW, Whitley RJ. Varicella-zoster vaccine for the prevention of herpes zoster. *N Engl J Med*. 2007;356(13):1338-1343. 3. Levin MJ. Immune senescence and vaccines to prevent herpes zoster in older persons. *Curr Opin Immunol*. 2012;24(4):494-500. 4. Kilgore PE, Kruszon-Moran D, Seward JF, et al. Varicella in Americans from NHANES III: implications for control through routine immunization. *J Med Virol*. 2003;70(suppl 1):S111-S118. 5. Chlibek R, Smetana J, Pauksens K, et al. Safety and immunogenicity of three different formulations of an adjuvanted varicella-zoster virus subunit candidate vaccine in older adults: a phase II, randomized, controlled study. *Vaccine*. 2014;32(15):1745-1753. 6. Patterson-Bartlett J, Levin MJ, Lang N, Schödel FP, Vessey R, Weinberg A. Phenotypic and functional characterization of ex vivo T cell responses to the live attenuated herpes zoster vaccine. *Vaccine*. 2007;25(41):7087-7093. 7. Weinberg A, Lazar AA, Zerbe GO, et al. Influence of age and nature of primary infection on varicella-zoster virus-specific cell-mediated immune responses. *J Infect Dis*. 2010;201(7):1024-1030. 8. Mahalingam R, Wellish M, Wolf W, et al. Latent varicella-zoster viral DNA in human trigeminal and thoracic ganglia. *N Engl J Med*. 1990;323(10):627-631. 9. Lungu O, Annunziato PW, Gershon A, et al. Reactivated and latent varicella-zoster virus in human dorsal root ganglia. *Proc Natl Acad Sci USA*. 1995;92(24):10980-10984. 10. Furuta Y, Takasu T, Fukuda S, et al. Detection of varicella-zoster virus DNA in human geniculate ganglia by polymerase chain reaction. *J Infect Dis*. 1992;166(5):1157-1159. 11. Kawai K, Gebremeskel BG, Acosta CJ. Systematic review of incidence and complications of herpes zoster: towards a global perspective. *BMJ Open*. 2014;4(6):e004833. 12. Prescribing Information for SHINGRIX. 13. Yawn BP, Saddier P, Wollan PC, St. Sauver JL, Kurland MJ, Sy LS. A population-based study of the incidence and complication rates of herpes zoster before zoster vaccine introduction. *Mayo Clin Proc*. 2007;82(11):1341-1349. 14. Centers for Disease Control and Prevention. Recommendations of the Advisory Committee on Immunization Practices for use of herpes zoster vaccines. *MMWR*. 2018;67(3):103-108. 15. Managed Markets Insight & Technology, LLC, Database as of September 2020. 16. Centers for Medicare and Medicaid Services. Medicare Part D Vaccines. <https://www.cms.gov/Outreach-and-Education/Medicare-Learning-Network-MLN/MLNProducts/Downloads/Vaccines-Part-D-Factsheet-ICN908764.pdf>. Updated June 2019. Accessed May 14, 2020. 17. Cunningham AL, Lal H, Kovac M, et al, for the ZOE-70 Study Group. Efficacy of the herpes zoster subunit vaccine in adults 70 years of age or older. *N Engl J Med*. 2016;375(11):1019-1032. 18. Lal H, Cunningham AL, Godeaux O, et al, for the ZOE-50 Study Group. Efficacy of an adjuvanted herpes zoster subunit vaccine in older adults. *N Engl J Med*. 2015;372(22):2087-2096.

Trademarks are owned by or licensed to the GSK group of companies.



©2021 GSK or licensor.  
SGXOGM210061 October 2021  
Produced in USA.

